

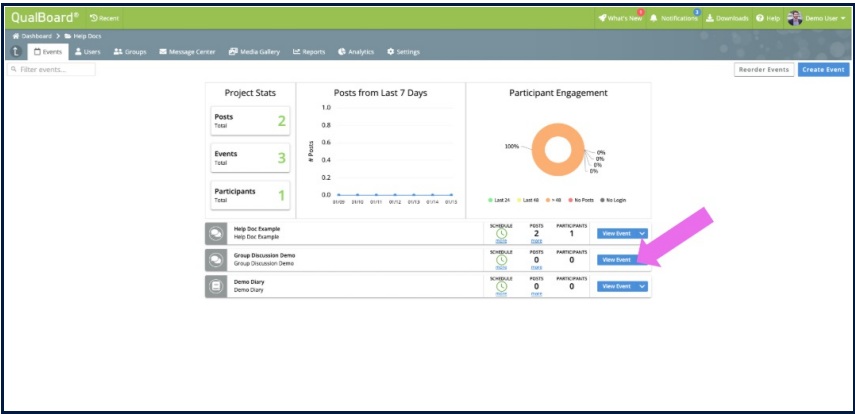
Last Modified on 01/15/2020 3:02 pm EST

From your project dashboard, click on the project you want to see responses to. Also from here, you can see the number of posts, participants, and open events on the overall project.

[illegible]

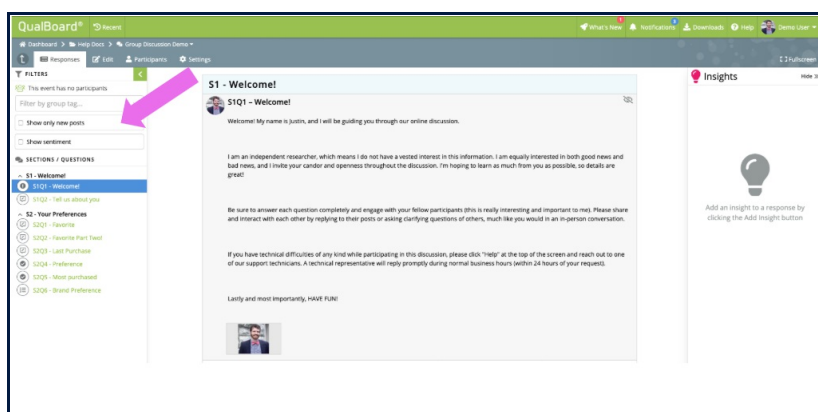
You're well on your way! Click **Next** for the next step.

Next, click the View Event button for the activity that you wish to see. The schedule for the activity, number of posts, and users on the event are also displayed here.



3 of 4

You will land on the responses page. This will display all responses for the Group Discussion. You can filter to specific posts using the filter bar on the left. To only see new posts, click the "Show only new posts" filter.



4 of 4

To quickly jump to a question, use the question list on the bottom left hand side.

QualBoard®

Secure

What's New

Notifications

Downloads

Help

Admin User

Dashboard

My Group

Group Discussion Demo

Responses

Lock

Participants

Settings

17 Participants

FILTERS

This event has no participants

Filter by group tag...

Show only new posts

Show sentiment

SECTIONS / QUESTIONS

S1Q1 - Welcome!

S1Q2 - We're glad you

S2 - Your Preferences

S2Q1 - Favorite

S2Q2 - Favorite Part Test

S2Q3 - Last Purchase

S2Q4 - Preference

S2Q5 - Most purchased

S2Q6 - Brand Preference

S1 - Welcome!

S1Q1 - Welcome!


Welcome! My name is Justin, and I will be guiding you through our online discussion.

I am an independent researcher, which means I do not have a vested interest in this information. I am equally interested in both good news and bad news, and I invite your candor and openness throughout the discussion. I'm hoping to learn as much from you as possible, so details are great!

Be sure to answer each question completely and engage with your fellow participants (this is really interesting and important to me). Please share and interact with each other by replying to their posts or asking clarifying questions of others, much like you would in an in-person conversation.


If you have technical difficulties of any kind while participating in this discussion, please click "help" at the top of the screen and reach out to one of our support technicians. A technical representative will reply promptly during normal business hours (within 24 hours of your request).

Lastly and most importantly, HAVE FUN!



Insights

None



Add an insight to a response by clicking the Add Insight button

Back

Next